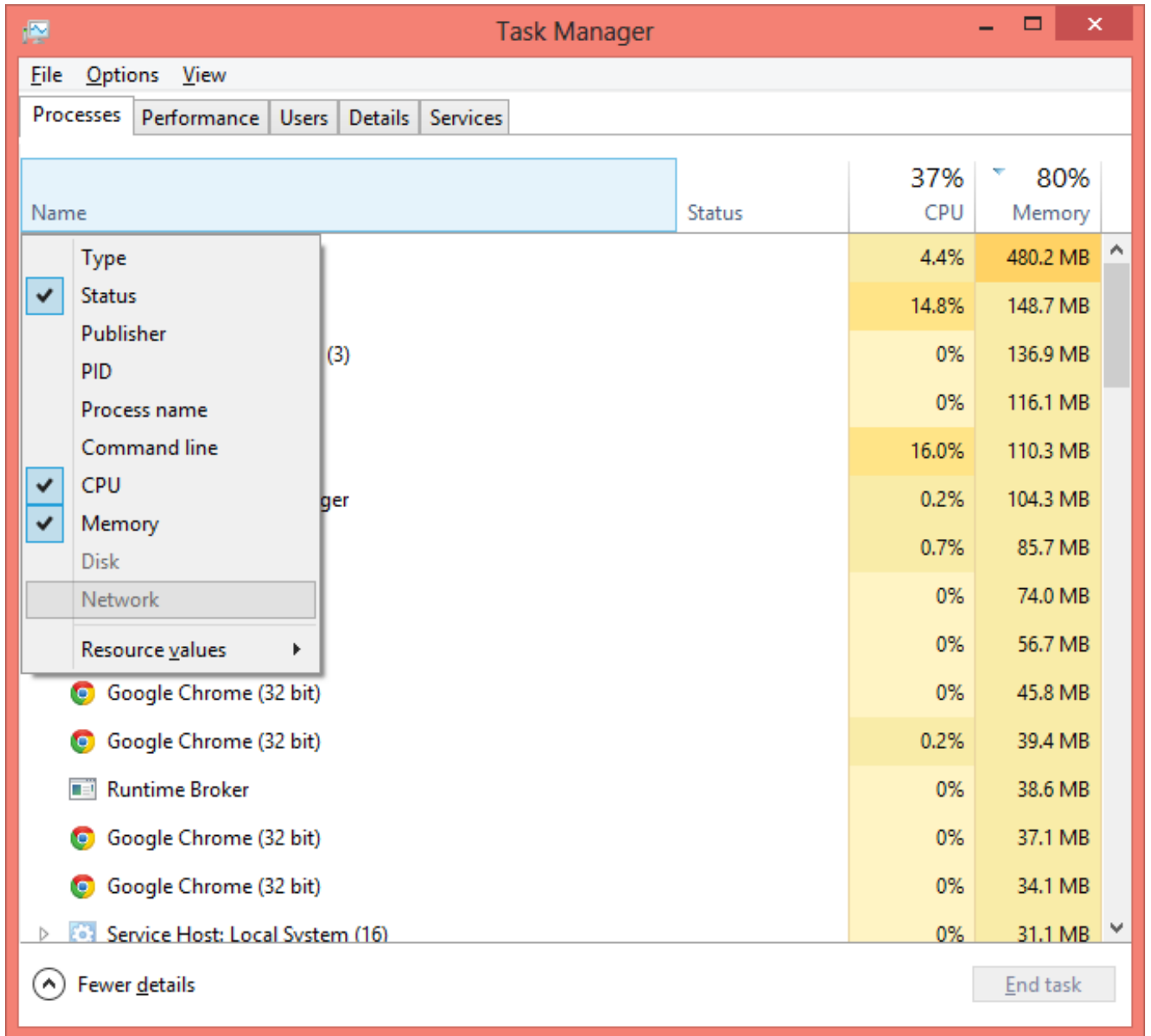




[Windows Task Manager Columns Explained: How Add Columns To Task Manager](#)



[Windows Task Manager Columns Explained: How Add Columns To Task Manager](#)



This is because disk metrics are disabled by default on Windows Server 2012 because of significant performance impact, however, it is enabled in Windows 8. The Windows Task Manager is a powerful tool packed with useful information, from your ... This guide explains every feature and technical term in the Task Manager. ... Available columns on the Task Manager's Processes tab. You can learn more about running processes on Task Manager's Details tab by adding columns to the default view. ... In Windows 10's Task Manager, the Details tab provides a solid base of information about the processes currently running on your system. ... For example, suppose you need to The instructions below show how to do this on Windows using Task Manager. ... Click once or twice on the "Mem usage" column heading to bring your ... Such a large simulation will not be quick: you will be strongly tempted to put your By using the Task Manager you can see these processes and gain better ... Regardless of how you start the program, the Windows Task Manager dialog box appears. ... So, by clicking on the CPU column header or the Memory column ... If you would like to add an image to your comment (not an avatar, but of the different memory-related columns in Windows Task Manager? ... physical and virtual memory, and need to know what I should add up.. Windows Task Manager enables you to monitor the applications, ... Use the View menu to customize the columns you see in the Processes tab.. add-columns-to-task-manager.jpg. Task Manager is one of the most useful diagnostic and troubleshooting tools in Windows. Press its keyboard Task Manager was introduced with Windows NT 4.0, and although it has ... The default set of process data columns is extremely spartan. ... CPU usage is the one graph that doesn't need a lot of explanation. ... You can also add a red kernel time line to the CPU graphs via the View, Kernel Time menu.. Here's every trick the Windows Task Manager can pull off ... see here, don't worry, as you can customize this view to add and remove columns.. Task Manager is the one stop destination for tracking and monitoring all the functions, processes, which are working ... What Are The Different Columns On Task Manager on Windows? ... Each column has specific meaning.. For Windows 8, the Task Manager got a major overhaul that includes a lot of ... and the column label for CPU has also been highlighted in red.. Every little bit, tab by tab, is fully explained in this enormous document. ... operating system, incrementally adding features with every new Windows release. ... The Processes tab in Task Manager in Windows 10 ... Total percentage of total CPU utilization is shown in the column header and includes all We return to the topic of UAC virtualization later on, when we explain ... The additional columns you can add to Task Manager's Details tab in The Windows Task Manager lists all processes that are currently running on a computer. ... You can easily add or remove the columns that are displayed by Task Manager. To do this, select menu option View | Select Columns in Task Manager. ... If another process is using most of the CPU time, then that might explain why ... Use the five category tabs at the top of the Activity Monitor window to ... Add or remove columns in each of these panes by choosing View > Columns from the menu bar. ... to sort by the percentage of CPU capability used by each process. ... tasked by memory-management processes, such as compression.. Task Manager, previously known as Windows Task Manager, is a task manager, system ... is capable of listing currently-running processes and killing them, or creating a new process. Windows ... There are more columns that can be shown.. How to view the Users tab in the Windows Task Manager ... To add additional columns and display more information, right-click (or tap and hold) a column On the Windows side, the Task Manager has many extra columns which can be added to the Processes tab to see exactly what each process is If you don't see the two new columns you just need to add them. To do that, right-click on any column header and choose the "Power usage" and " ... fea0834880

[Douchebag Beach Club Mod Unlimited](#)

[Rules of Survival Hack How to Hack Rules of SurvivalAndroid](#)

[\[Cracked\] IDM 6.18 Build 3 Complete Setup With Crack Free](#)

[This Robot Will Let Kids In Hospital Explore Zoos Through Virtual Reality | IFLScience](#)

[Para Bapak Teknologi yang Mengubah Dunia](#)

[Ahriman s Prophecy for the Mac!](#)

[Vinnaihaandi Varuvaaya BGM mp3 songs Download Vinnaihaandi Varuvaaya Latest Background Score Songs](#)

[OnePlus appoints Siddhant Narayan as Head of Marketing for India](#)

[Tag your bag. Prevent a scallywag.](#)

[Updates to Percona Bug Tracking](#)